

How to Apply Peel Bond™

XIM Peel Bond™ is a unique Water Based, Clear, Very High Building Bonder / Sealer that can fill and bridge rough surfaces. It is formulated to bond-to and seal a wide range of construction surfaces. It Bonds paint and will stay flexible over the life of the paint and, therefore, can help reduce cracking and peeling.

Product Preparation:

XIM's Peel Bond™ is ready to apply directly from the can. *Note:* Keep the containers tightly closed when not in use. Store at room temperature. Keep from freezing.

The Surface Condition:

The surface can be rough but it must be a sound surface for long lasting results.

Peel Bond will not penetrate into old paint. It will not reseal or re-bond peeling paint, loose paint, loose or rotted wood, loose or “punky” masonry. These types of surfaces require removal of the loose or weak surface features until the surface is sound.

Careful surface preparation and cleaning is the key to a good result. Be sure the surface is thoroughly clean and dry, free from all grease, wax, oil, loose paint and dirt or rust. The first step is to clean with a strong detergent (soap and water), rinse well and allow to dry. Power washing is recommended to clean chalky surfaces.



BIG ADVANTAGE

Peel Bond will bond to and fill rough surfaces, and, therefore, reduce the need to sand and level the surface before priming.

This alone can reduce the surface preparation time many fold and save money for the applicator.

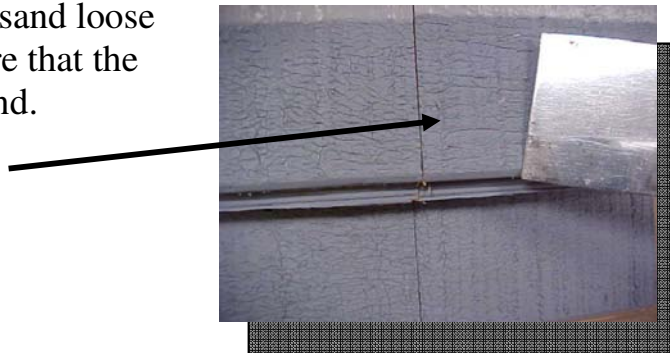


Surface Prep:

Careful surface preparation and cleaning is the key to a good result. Be sure the surface is thoroughly clean and dry, free from all grease, wax, oil, loose paint and dirt or rust.

Power wash the surface to remove loose paint and debris.

Or . . . scrape / sand loose edges to ensure that the surface is sound.



**Power Wash
all loose
paint and debris.**

NOTE: Remove the remaining debris and dust from sanding and scraping. Allow to dry after power washing. Measure with a Moisture Meter – wait until the moisture is below 15% to prime with Peel Bond. This way, the Peel Bond can penetrate the dry wood fiber.

How to Apply :

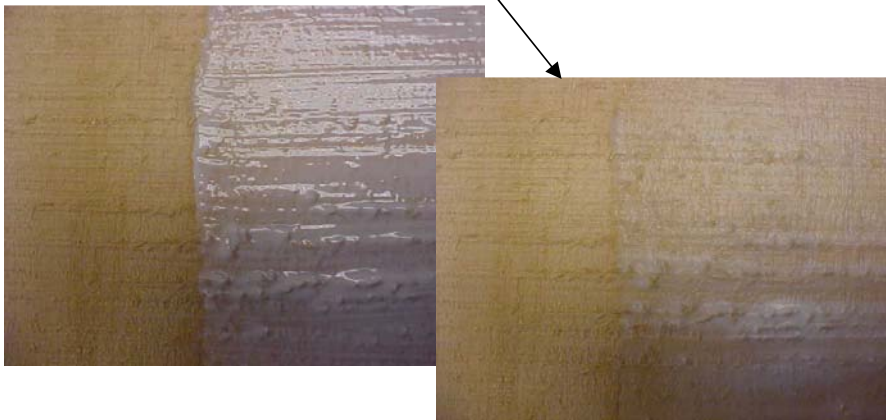
Peel Bond can be applied by spray, brushing or rolling. **NOTE: It does not look or feel like traditional “thinner viscosity” paints.**

When Brushing or rolling, apply straight from the container. Peel Bond can be applied heavily. It will build and fill low areas. Even though High-Build, it will still wet-out the surface and flow well.



Peel Bond appears white and hazy initially. It dries to tack free in about 30 minutes under standard conditions (77 deg. F and 50% relative humidity) Thicker coats will take longer to dry.

Peel Bond will dry to a clear appearance. When clear, it is ready to re-coat or paint.



If your objective is to only prime and seal the surface, apply one full coat. If your objective is to build and fill, apply multiple full coats. Allow the Peel Bond to turn clear before each coat.

It can be top coated within 40 minutes with Latex Paints.

When Spraying:

Spray with airless equipment without thinning. We recommend a 0.017 tip and 1200 PSI.

Use as a Penetrating Sealer -

Apply at 5-10 mils wet. Peel Bond will appear hazy, white when first applied. It will penetrate into the wood or into a porous surface and bond.

Use as a High Build Filling primer –

Apply as high as 20 mils wet. Spray multiple coats as required. Allow the Peel Bond to turn clear before each coat. **As shown previously, the cooler the temperature – the longer this will take.**



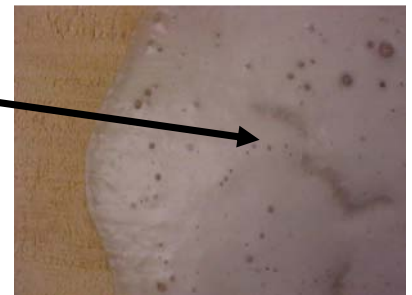
Back-Brushing or Back-Rolling after spraying heavy coats can help “work” the Peel Bond into recessed and low areas.



Do Not Spray or apply heavier than 20 mils wet !

Although Peel Bond can be applied heavier than 20 mils wet, excess thickness can result in **MUD CRACKING** and **BUBBLES** in the film.

Too thick and you could see sagging as well!



Clean-Up: Clean equipment with soap and water.

Safety Tips

First Aid: If swallowed, do not induce vomiting. In case of eye contact, flush with plenty of water. **CALL A PHYSICIAN IMMEDIATELY.** For additional information see the Material Safety Data Sheet (MSDS) for this product.

KEEP OUT OF REACH OF CHILDREN.

